



**Presented by:**

**Patrick Rutter - Deputy County Administrator**

## The Process

1. Comp Plan
2. Zone It
3. Permit It
4. Roads
5. Design

---

COMP PLAN

---

ZONE IT

---

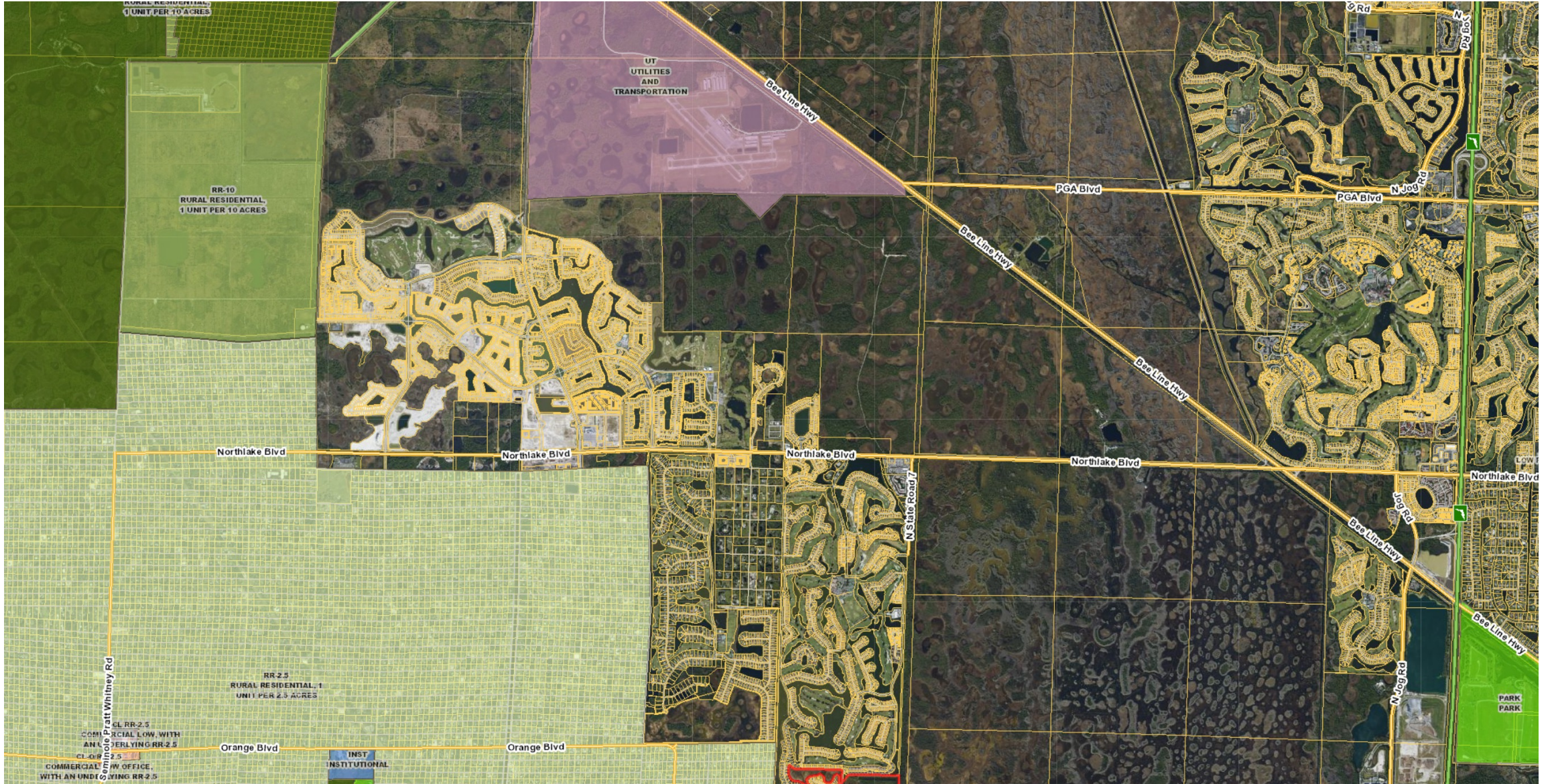
PERMIT IT

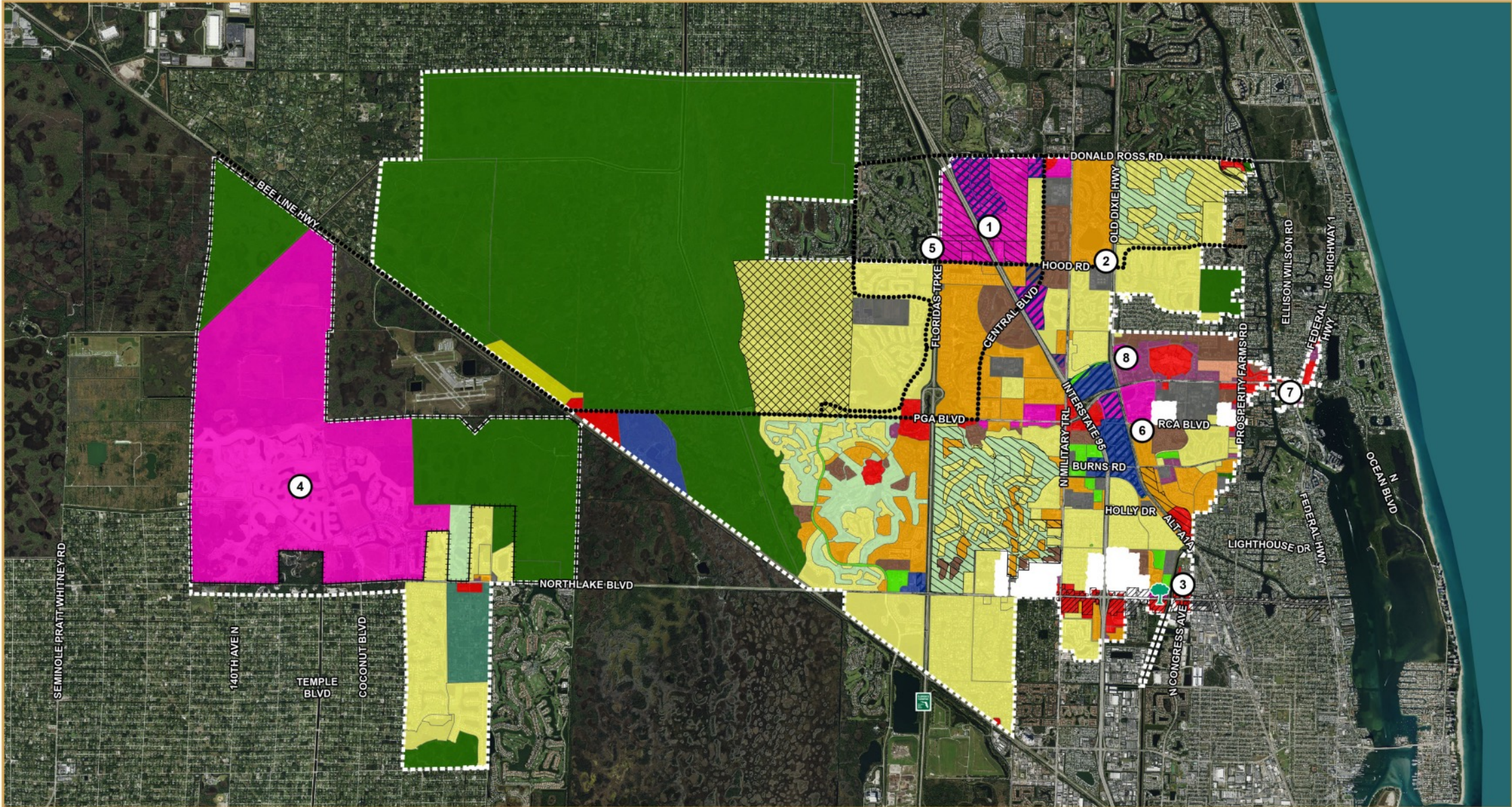
---

ROADS

---

DESIGNS





**MAP A.1. 2035 FUTURE LAND USE**  
 City of Palm Beach Gardens  
 Palm Beach County, Florida



- SITE SPECIFIC CONDITIONS \*
- 🌳 MACARTHUR BOULEVARD HISTORIC OVERLAY (MBHO)
- ⚡ PARKWAY SYSTEM
- 🛣️ WESTERN NORTHLAKE BOULEVARD CORRIDOR PLANNING AREA
- 📄 APPROVED DRIP/PCD WITH MASTER SITE PLAN ON FILE
- 🔬 BIOSCIENCE RESEARCH PROTECTION OVERLAY (BRPO)
- 📏 NORTHLAKE BOULEVARD OVERLAY ZONE (NBOZ)
- 🏠 MUNICIPAL BOUNDARY
- 🏠 UNINCORPORATED PALM BEACH COUNTY

- 🔴 C - COMMERCIAL
- 🟢 CONS - CONSERVATION
- 🟡 CR - COMMERCIAL RECREATION
- 🟢 G - GOLF
- 🟦 I - INDUSTRIAL
- 🟤 MIH - MOBILE HOME
- 🟪 MXD - MIXED USE
- 🟡 P - PUBLIC
- 🟤 PO - PROFESSIONAL OFFICE
- 🟤 RH - RESIDENTIAL HIGH
- 🟢 RL - RESIDENTIAL LOW
- 🟡 RM - RESIDENTIAL MEDIUM
- 🟢 ROS - RECREATION OPEN SPACE
- 🟢 RR - RURAL RESIDENTIAL
- 🟡 RR10 - RURAL RESIDENTIAL (1 PER 10 ACRES)
- 🟡 RR20 - RURAL RESIDENTIAL (1 PER 20 ACRES)
- 🟢 RVL - RESIDENTIAL VERY LOW

Updated June 28, 2023  
 Source: PBG-Planning & Zoning  
 \*Site Specific Conditions for numbered projects are located on Table A.1 – Site Specific Conditions

## Zone It

- Prelim review/consultation
- Submit application
- Address comments (if applicable)
- Resubmit plans with corrections
- Approved by staff

## Permit It

- Submit Permit Application
- Building staff reviews plans for approval
- Address comments (if applicable)
- Resubmit plans addressing corrections
- Approved by staff





## Road Building Process

- Concept
- Transportation Improvement Map (TIM)
- 5 Year Road Plan
- Design
- Right-of-Way Acquisition
- Construct



# Thank you

