



Transportation: Today and Tomorrow
State of the County



Maria G. Marino
Palm Beach County Mayor District I

Palm Beach County at a Glance



1 of four counties in Florida and one of just 53 nationally to achieve AAA bond rating.



\$9.6 billion
gross budget



7,378
positions


FitchRatings

MOODY'S

S&P Global
Ratings

Engineering & Public Works

Palm Beach County maintains 3,500 lane miles of paved roads. If you line these up, end to end, this is more than the distance from Key West, Florida, to Seattle, Washington.

3,523 

lane miles of paved roads

8 

bascule bridges

62 

miles of shell rock roads

270 

active roadway production projects in progress

1,137 

miles of sidewalk

2,142 

acres of right-of-way mowing

1,400 

traffic signals & flashers

Palm Beach Countywide Transportation Master Plan (CTMP)

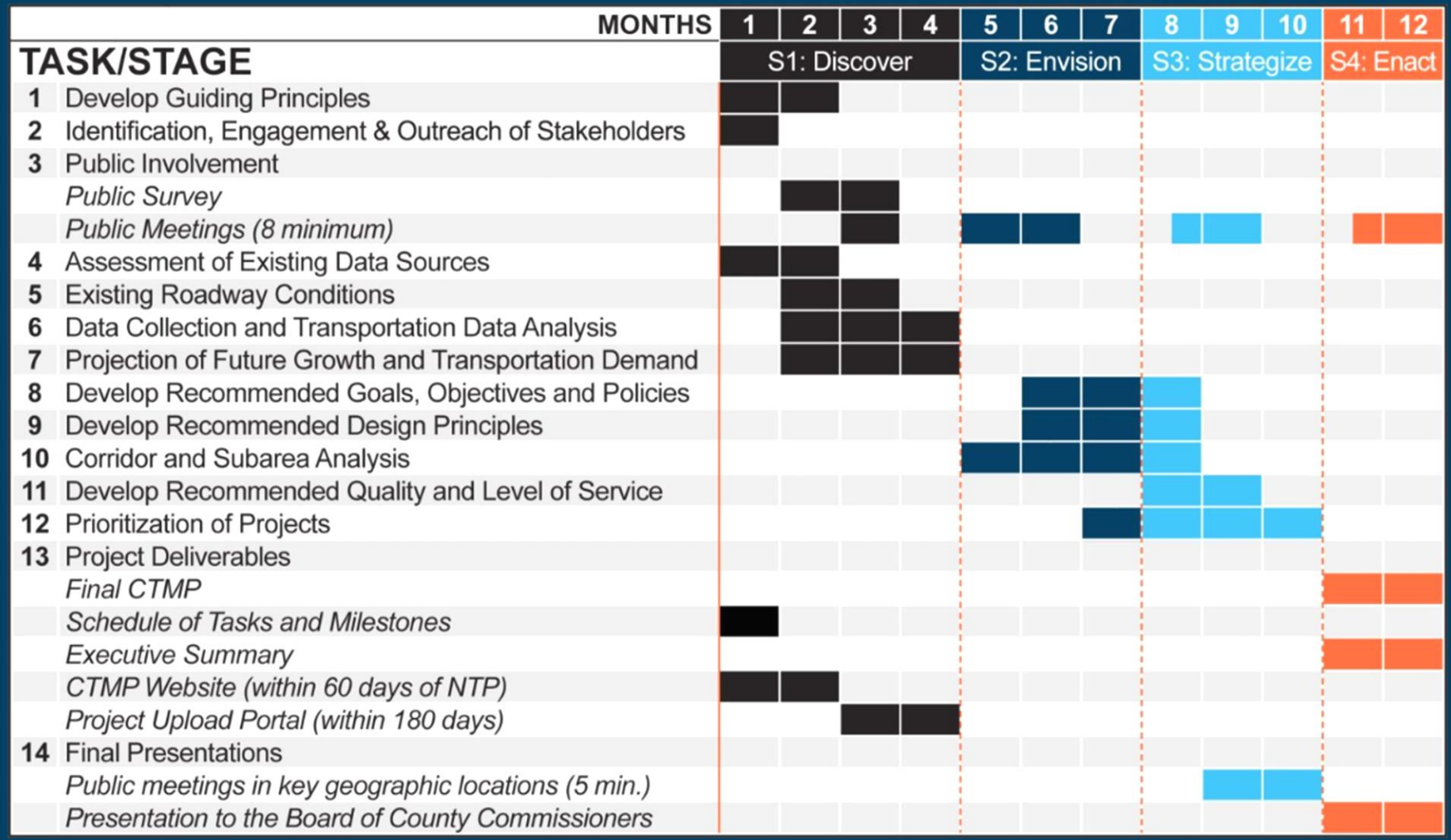


PALM BEACH COUNTY & 39 CITIES
**COUNTYWIDE
TRANSPORTATION
MASTER PLAN**



- Establish best practices for regional mobility
- Promote and include design principles for safe streets
- Address the transportation planning of regionally significant corridors that traverse various jurisdictions
 - (County roadways and collector roadways, regional transit systems)
- Integrate for land use and transportation
- Establish common Goals, Objectives and Policies within Palm Beach County
- Define multi-jurisdictional processes

Project Timeline



Upcoming Meetings

North County
 Palm Beach State College
 Tuesday, Oct 28 | 6-8 PM

Central County
 Greenacres Community Center
 Wednesday, Oct 29 | 6-7 PM

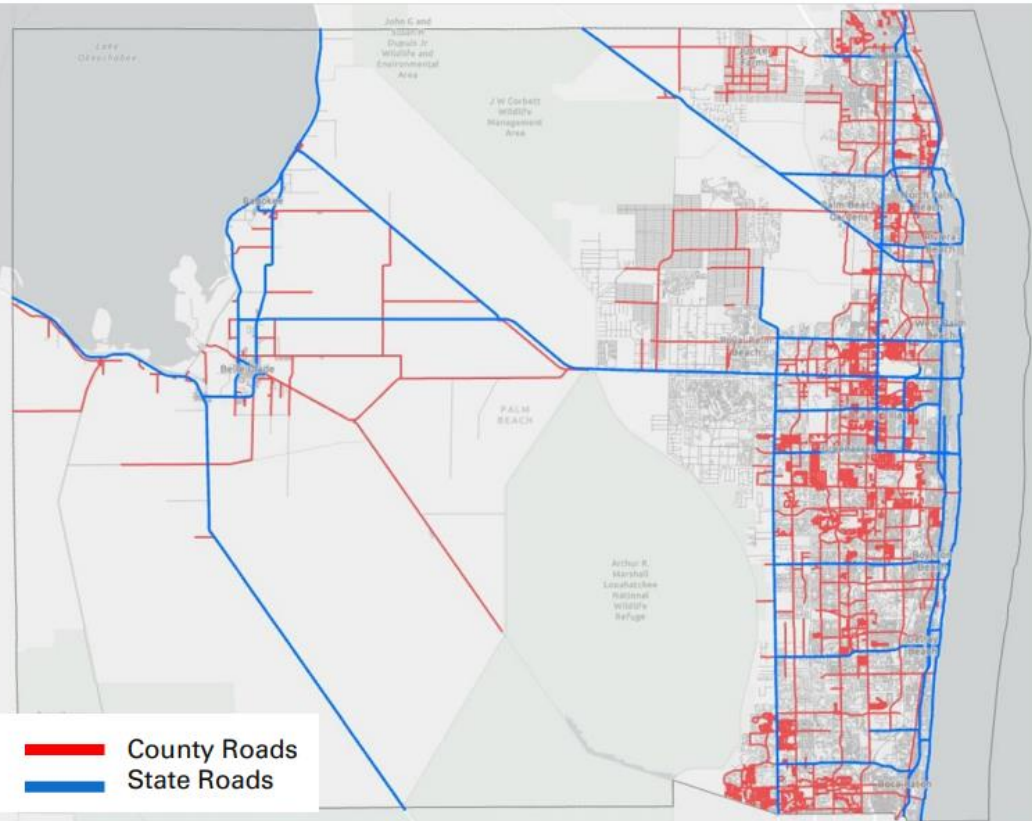
Countywide (Virtual)
 Thursday, Oct 30 | 6-7:30 PM

THE PALM BEACH COUNTY SAFETY ACTION PLAN



What is the Safety Action Plan?

An implementation focused plan for State and County-maintained roadways in Palm Beach County with the goals of reducing traffic-related crashes through strategic infrastructure upgrades.



Expanding Transportation Options



Port St. Lucie Express

WHAT IS
**FLASHING
YELLOW
ARROW?**

A traffic signal that means you can turn left if there is a safe gap in traffic.



Advanced Air Mobility (AAM)
National Business Aviation Association

2026 Florida Legislative Session – Transportation Requests



Australian Avenue Road and Drainage Improvements:

\$2.5 M ask, 75% local match

County Road 880 C-51 and Same Senter Road Bridge Replacements:

\$13 M ask, 70% local match

Tri-Rail Funding: Support legislative action to fund the Florida Rail Enterprise Program to fund South Florida Regional Transportation Authority's Tri-Rail operations

Autonomous Vehicles & Technology Enhancements



Florida Legislative Session | January 13, 2026

Thank You!

Questions?



MMarino@pbc.gov



Robert Weisman Governmental Center

301 N. Olive Avenue
West Palm Beach 33401
561-355-2201

North County Complex

3188 PGA Boulevard
Palm Beach Gardens 33410
561-624-6547



pbcgov.com/D1

