

April 2024

Palm Beach County Department of Airports

North County Neighborhood Coalition

PRESENTED BY:

Laura Beebe
Director of Airports
Palm Beach County Department of Airports



Palm Beach County's Airport System

Palm Beach International Airport

Commercial Service and General Aviation

PBI

North Palm Beach County General Aviation Airport

Reliever, General Aviation

F45



Palm Beach County Park Airport (Lantana)

Reliever, General Aviation

LNA

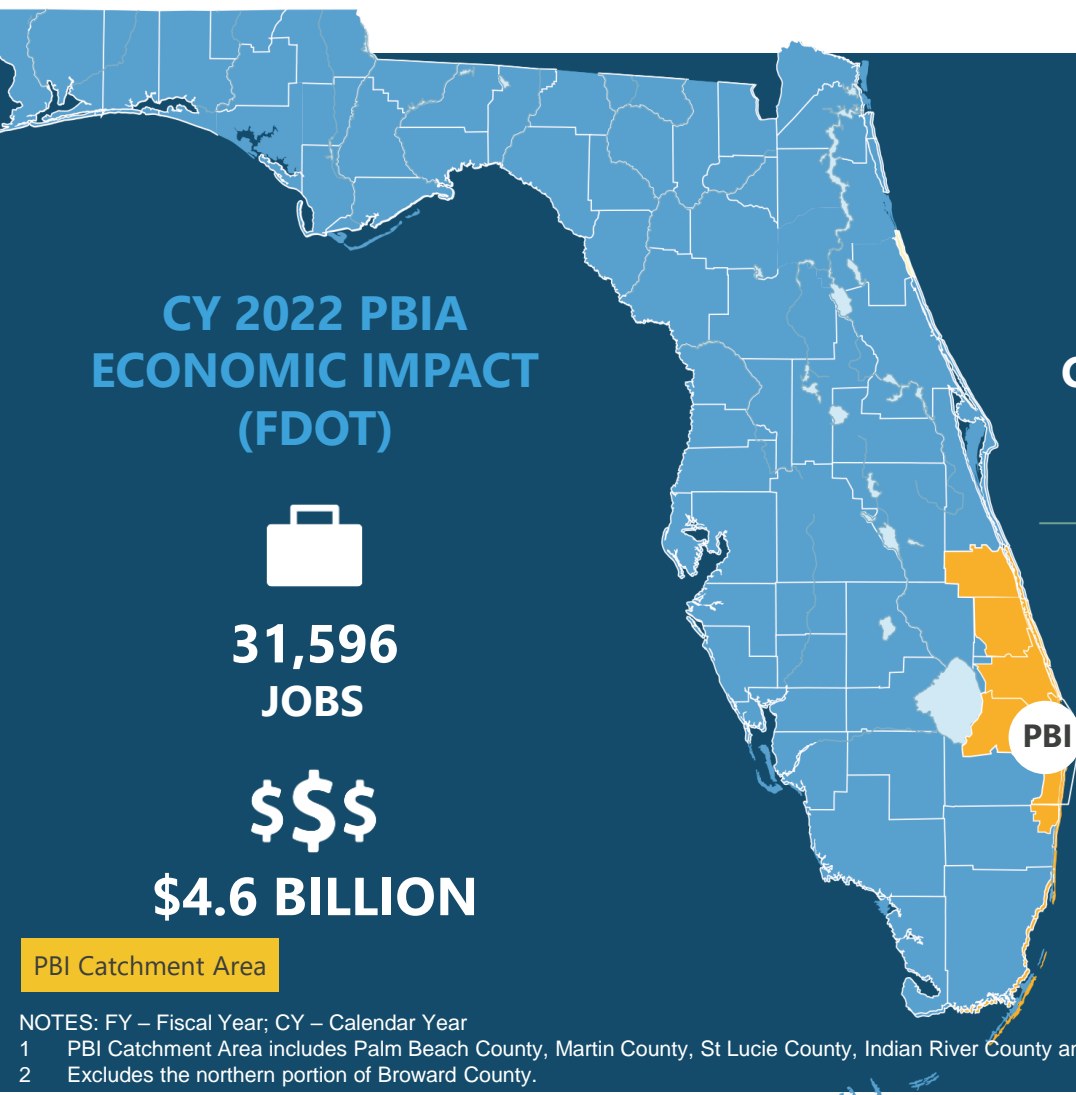
Palm Beach County Glades Airport (Pahokee)

General Aviation

PHK

Palm Beach By the Numbers

INTERNATIONAL AIRPORT



CY 2022 PBIA ECONOMIC IMPACT (FDOT)



31,596
JOBS



\$4.6 BILLION

PBI Catchment Area

KEY ACTIVITY METRICS



CY 2023 PASSENGERS
7.8M

Up 17% from CY 2022



14

PASSENGER SERVICE
AIRLINES

As of March 2024



NONSTOP SERVICE TO
44 DESTINATIONS

As of March 2024

SOCIOECONOMIC CHARACTERISTICS²

(PBI CATCHMENT AREA)



TOTAL POPULATION

2.2M → 2.4M

FY 2023 FY 2030



TOTAL EARNINGS

\$74.3B → \$90.6B

FY 2023 FY 2030



TOTAL PER CAPITA
PERSONAL INCOME

\$81,330 → \$90,595

FY 2023 FY 2030

NOTES: FY – Fiscal Year; CY – Calendar Year

1 PBI Catchment Area includes Palm Beach County, Martin County, St Lucie County, Indian River County and the northern portion of Broward County.

2 Excludes the northern portion of Broward County.

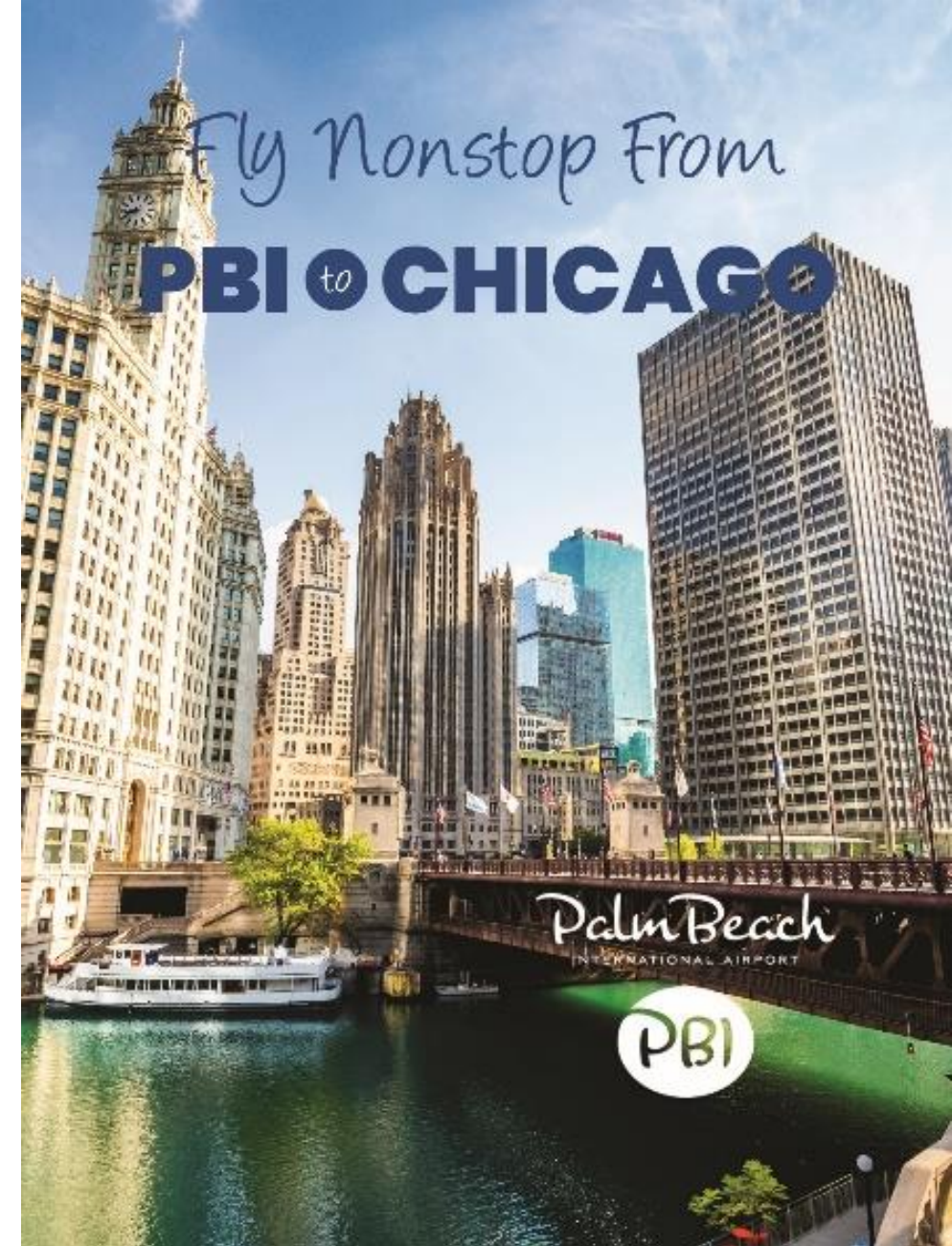
PBI Air Service Update

American Airlines 

- Chicago-ORD – extended service throughout summer (pause 9/3/24 - 10/27/24)
- Charlotte - 5x daily through summer (freq. increase; summer 2023 operated 4x daily)

 DELTA

- Atlanta operating 11x daily in July (highest frequency since summer 2018)



PBI Air Service Update



→ Asheville, NC - Operating 5x weekly in October (frequency increase)



→ San Juan, Puerto Rico - Begins June 2nd (3x weekly)



→ Marsh Harbour, Bahamas (3x weekly)

→ NEW - Nassau, Bahamas (5x weekly)

→ NEW - Pensacola, FL (2x weekly)

→ NEW - Tallahassee, FL (3x weekly)

→ Tampa, FL (11x weekly)

Two screenshots of Facebook posts from Palm Beach International Airport (PBI). The top post is a sponsored announcement about non-stop flights to San Juan, Puerto Rico, starting June 2nd, with a video player showing a cityscape and the text "NON-STOP FLIGHTS FROM PBI SAN JUAN FALL IN LOVE WITH THE ISLE OF ENCHANTMENT". The bottom post is another sponsored announcement about one-way fares starting at \$78, with a video player showing a beach scene and the text "WE'RE BACK!". Both posts include engagement metrics like likes, comments, and shares, and a "Book Today" button.

Palm Beach International Airport (PBI)
Sponsored • 🌐

Visit the Isle of Enchantment - San Juan, Puerto Rico with non-stop flights from Palm Beach with Frontier Airlines! Service Starts June 2nd!

NON-STOP FLIGHTS FROM
PBI ✈️
SAN JUAN
FALL IN LOVE WITH
THE ISLE OF ENCHANTMENT

0:11 / 0:24

PBIA.ORG
Fall in Love with San Juan! [Book Today](#)

👍 48 1 comment 8 shares 4k views

👍 Like 🗨 Comment ➦ Share

Palm Beach International Airport (PBI)
Sponsored • 🌐

With one-way fares from West Palm Beach starting at \$78, Silver Airways has you covered with flights for some fun in the sun!

WE'RE BACK!

0:08 / 0:39

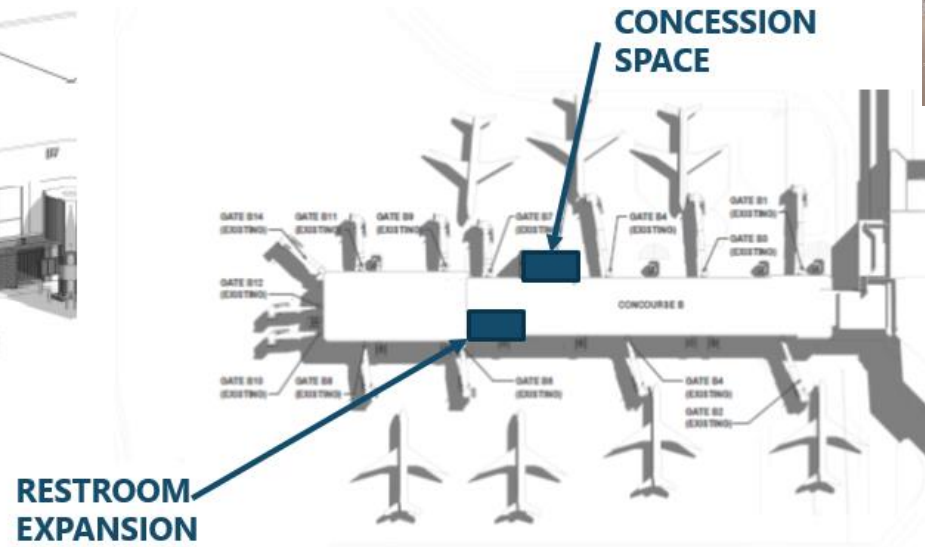
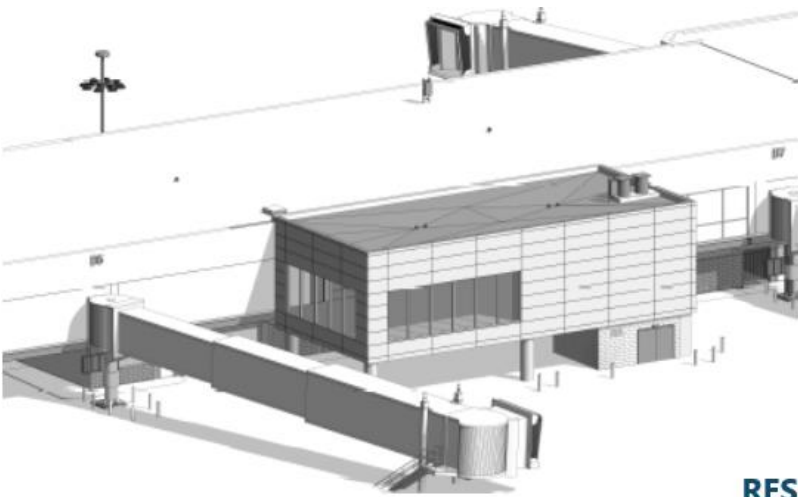
PBIA.ORG
March into New Adventures! [Book Today](#)

👍 48 1 comment 8 shares 4k views

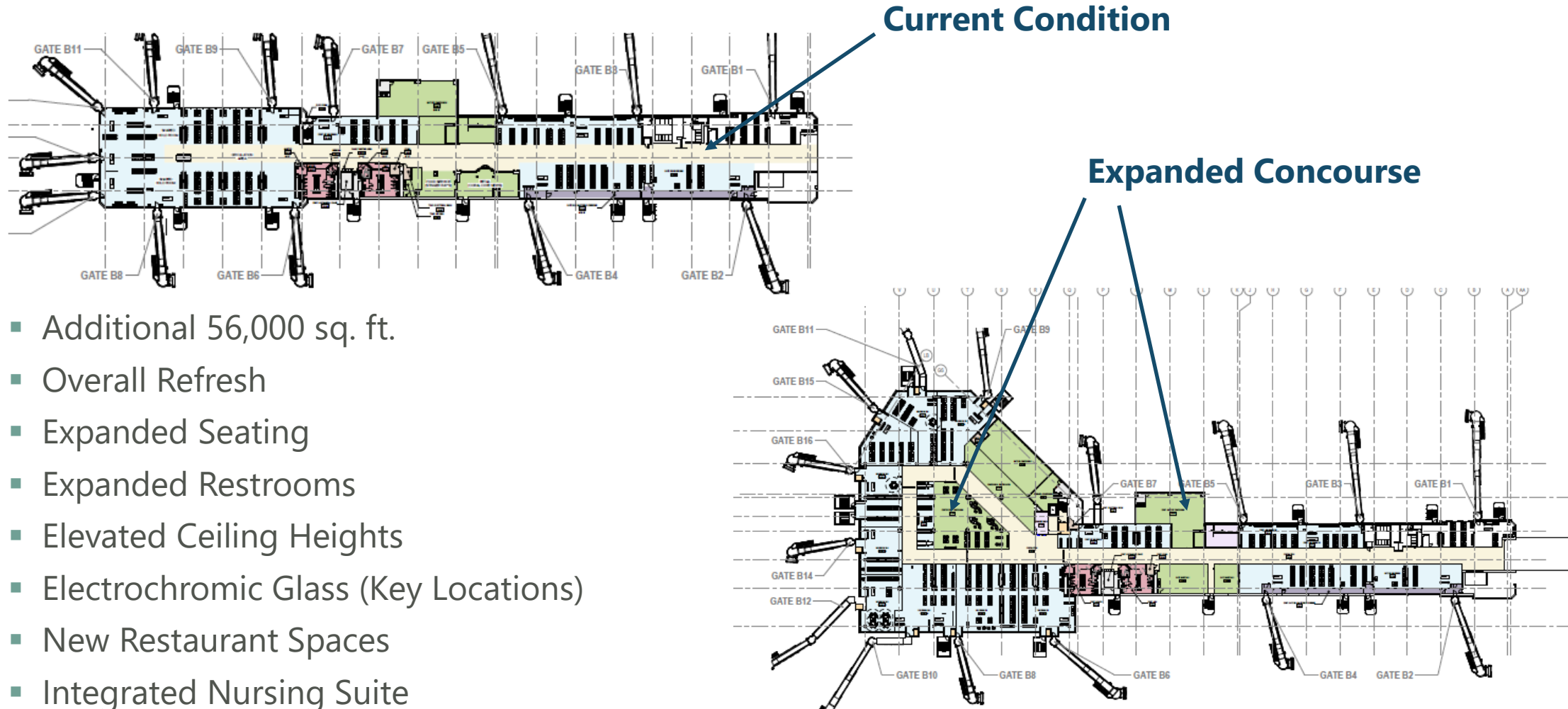
👍 Like 🗨 Comment ➦ Share

Phase I - Concourse B Expansion

- Phase I- expansion of restroom facilities and construction of approximately 3,000 square feet of new shell space for a future sit down restaurant between Gates B5 and B7
 - Complete Fall 2024
- Phase II – interior renovation, utility relocation
 - Commencing Summer 2024



PBI Concourse B Expansion



- Additional 56,000 sq. ft.
- Overall Refresh
- Expanded Seating
- Expanded Restrooms
- Elevated Ceiling Heights
- Electrochromic Glass (Key Locations)
- New Restaurant Spaces
- Integrated Nursing Suite
- Infrastructure for (2) Loading Bridges

Upcoming Requests for Proposals

PBI – Food, Beverage & Retail Concession Agreements (2 Opportunities)

■ Program Goals

- **SOPHISTICATED**, but **NOT EXCLUSIVE**, concepts that provide a sense of place through innovative design features, creating engaging customer experiences
- Immerse customers in the sights, smells, sounds and tastes of Palm Beach County/South Florida
- Focus on local, regional, and national concepts/products
- Provide a **VARIETY** of options for all price points, including healthy, kosher and vegan options.
- Include sustainable practices through packaging, reduction of food waste, use of energy efficient appliances, etc...
- **ELEVATE THE CUSTOMER EXPERIENCE**



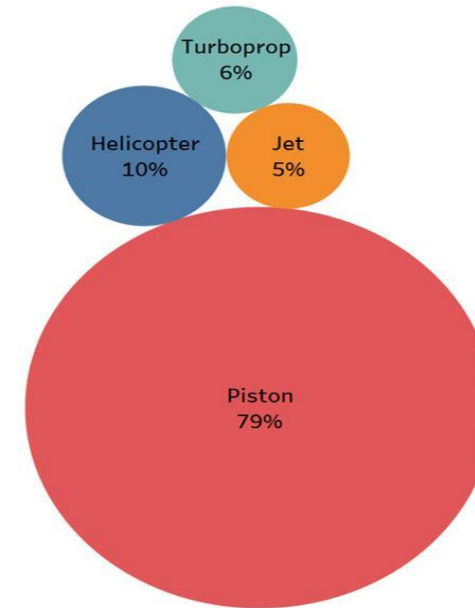
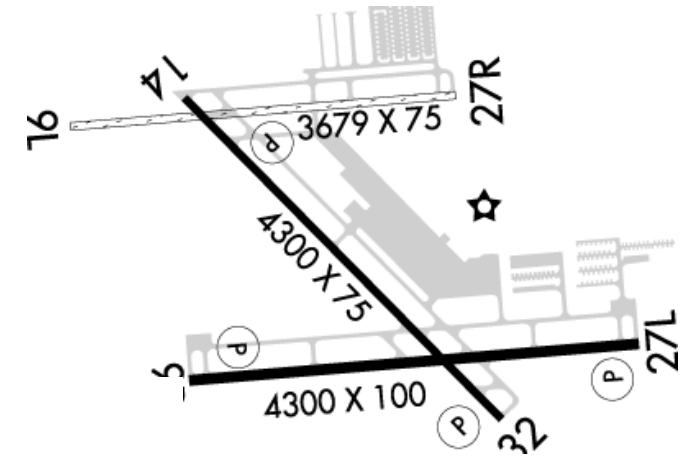
On the Horizon - Main Terminal Modernization

- Connecting Concourses A/B and C through new post-security space
- Replacing the existing skylight
- New terrazzo flooring
- Expanding security checkpoints
- New common use lounge space
- Space for engaging experiences



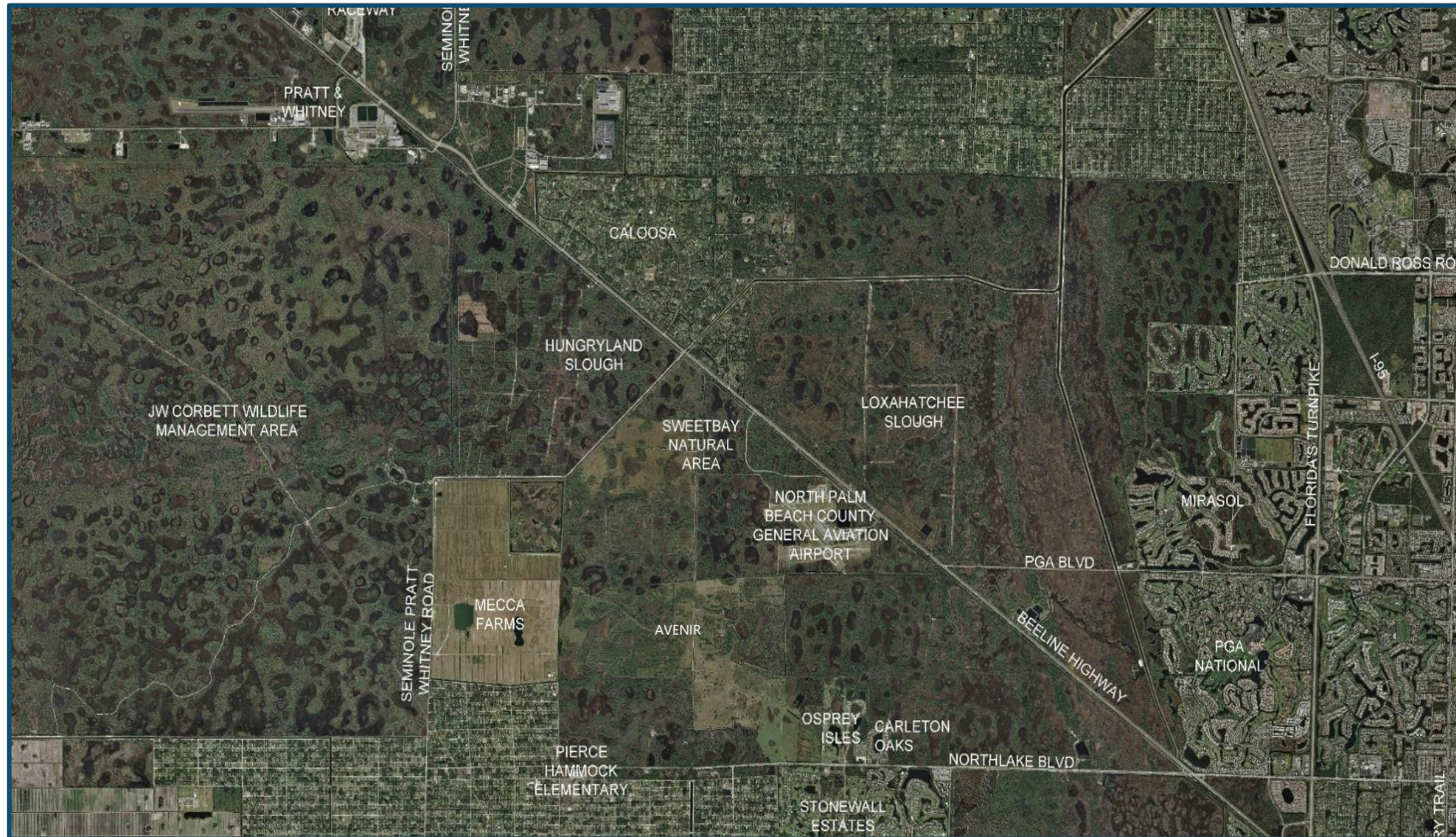
North Palm Beach General Aviation Airport (F45) Overview

- Three runways
 - 9R/27L – 4300' long; 100' wide
 - 14/32 – 4300' long; 75' wide – preferred runway for noise abatement
 - 9L/27R – turf runway – 3679' long; 75' wide
- Classified as a regional general aviation airport
- Serves as a designated reliever airport for PBI
- Supports business and recreational general aviation, including flight training
- More than 250 based aircraft
- 176 aircraft storage hangars
- Approximately 100,000 annual operations



Operation Distribution at F45 by Category of Aircraft (2019)

North Palm Beach County General Aviation Airport (F45) Location Map



North Palm Beach County General Aviation (F45) Economic Impacts



Jobs

467

Employed



Payroll

\$22.4

Million



Value
Added

\$36.5

Million



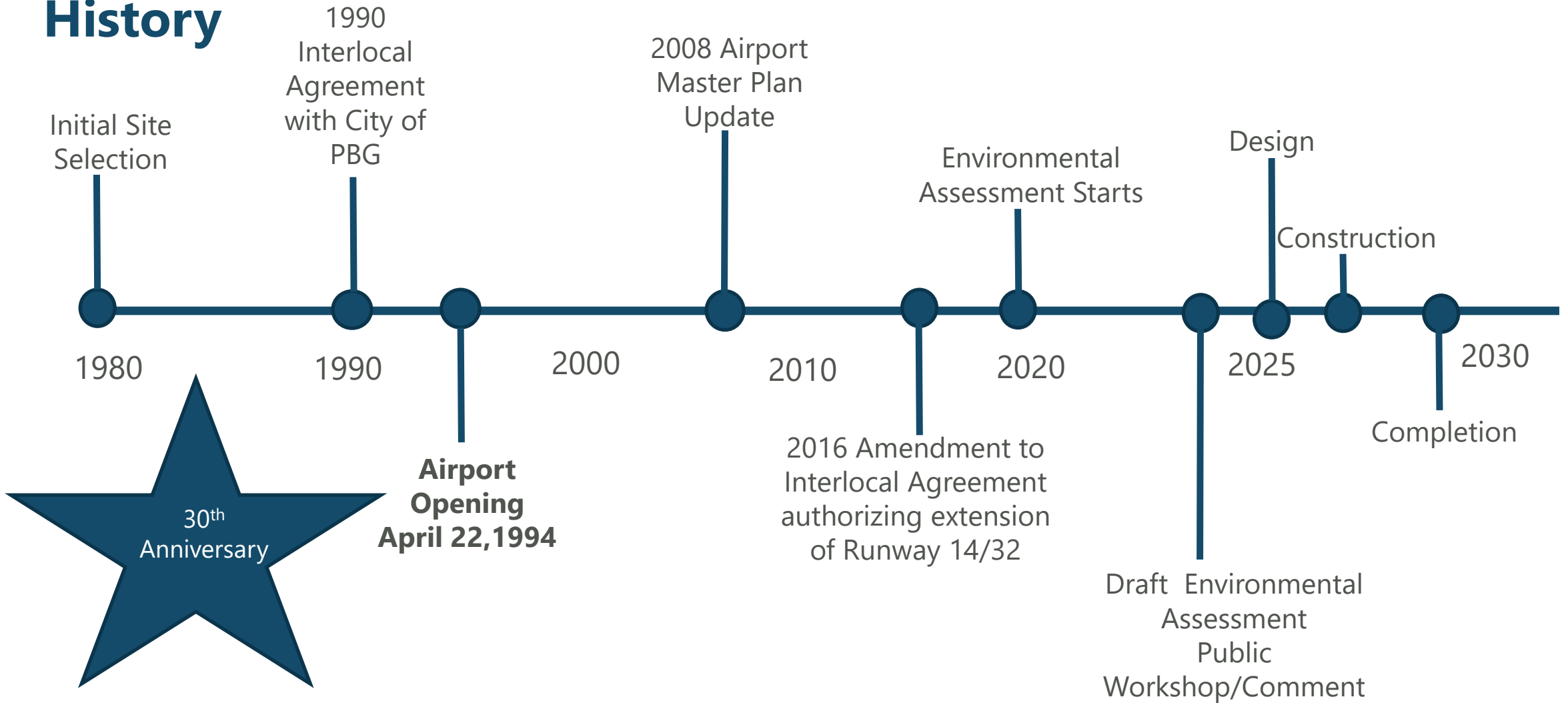
Economic
Impact (Output)

\$77.3

Million



North Palm Beach County General Aviation Airport (F45) History



North County General Aviation Airport (F45) Operational Limitations

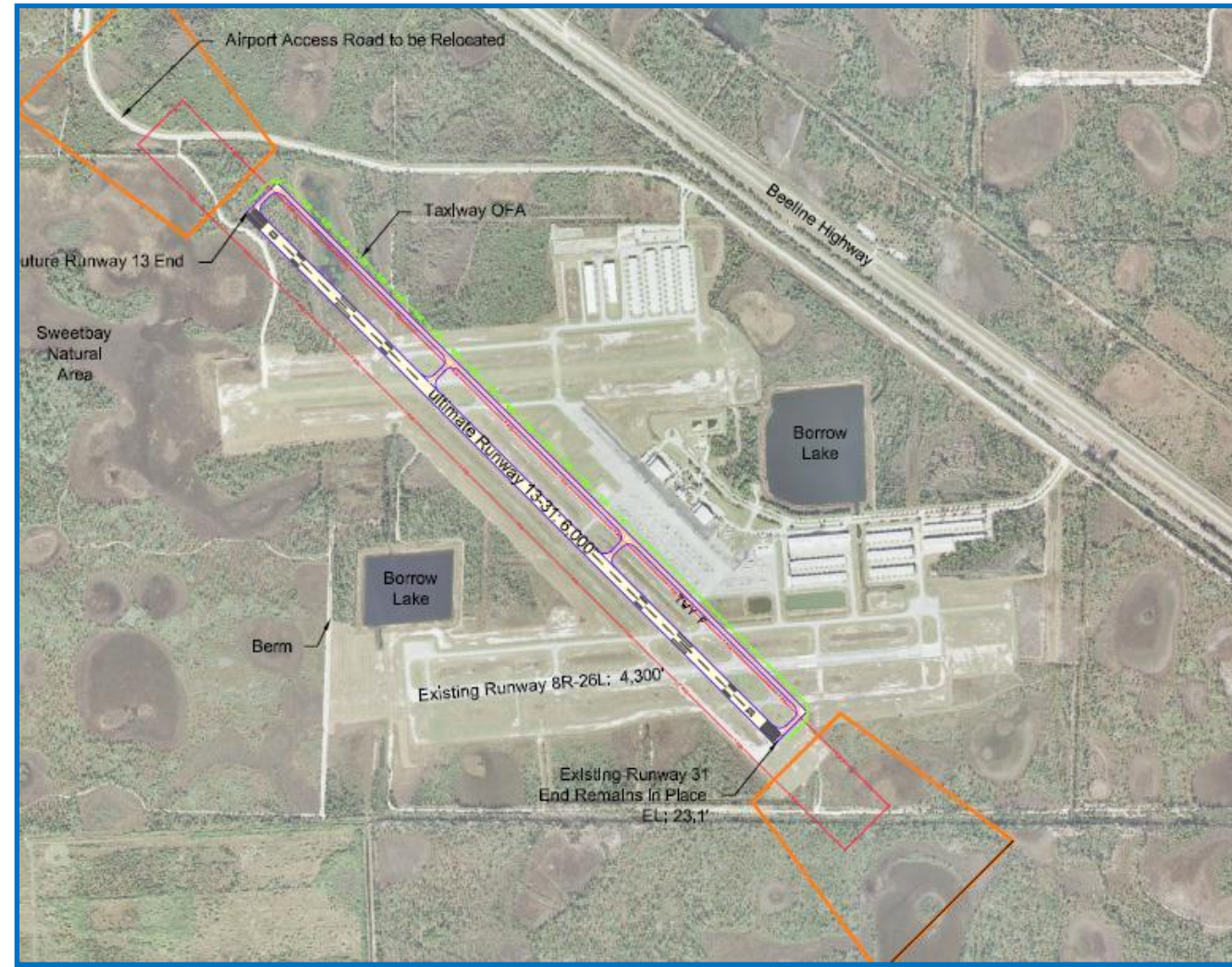
- A number of factors (such as aircraft weight, wind direction, elevation, and temperature) can affect an aircraft's take-off and landing distance
- Pilots may be required to reduce the number of passengers, the amount of payload, and/or the amount of fuel to depart from F45 based on environmental conditions
- Larger aircraft operators may elect to use alternative airports due to runway length
- Operational limitations reduce the usefulness of F45 as a reliever airport
- Population and business growth in northern Palm Beach County support the need for improvements to accommodate general aviation demand



North Palm Beach County General Aviation Airport (F45) Project Summary

- **Extension of Runway 14/32**
 - Existing – 75' wide; 4,300' long
 - Future – 100' wide; 6,000' long
 - Extension of parallel taxiway
 - Will allow jet aircraft to operate with fewer operational restrictions
- **Federal Contract Tower (FCT)**
 - Application submitted
 - Identified as a candidate in FCT Program
- **Draft Environmental Assessment**
 - Public Workshop/Comment Period

<https://www.pbia.org/general-aviation/north-palm-beach-county-airport/>



Questions?

